

CORPORATE SUMMARY



TANJUNG MANIS
INTEGRATED PORT SDN BHD

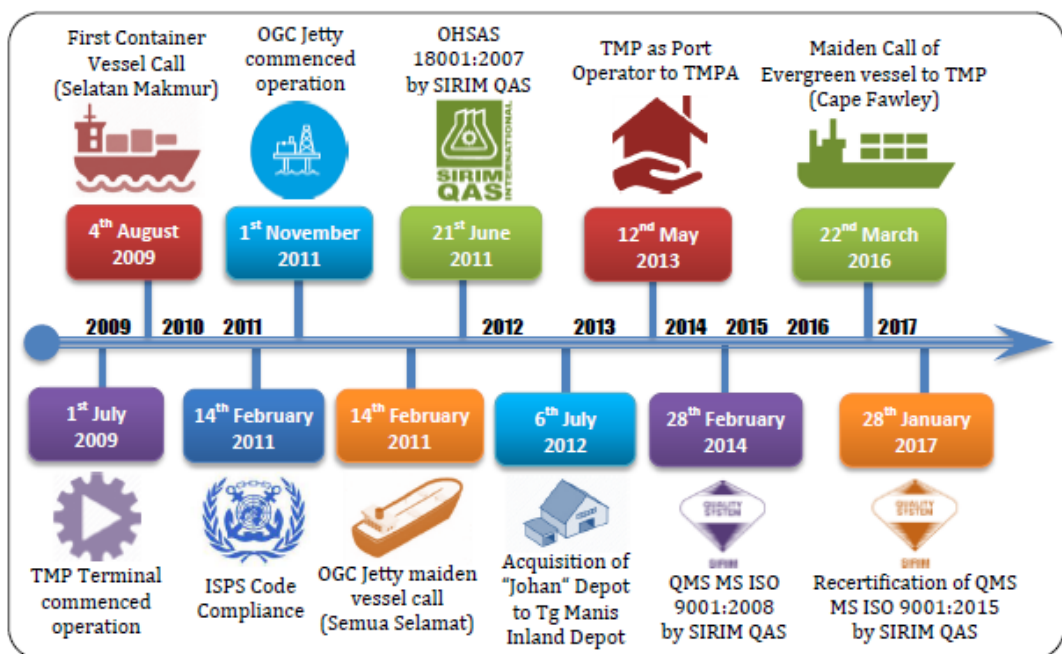


CERTIFIED QMS ISO 9001:2015
CERTIFIED OHSAS 18001:2007
CERTIFIED ISPS CODE

THE PORT OVERVIEW

Tanjung Manis Integrated Port (TMP) <hr/> Establishment Date 26th February 2009 <hr/> Commencing Date 1st July 2009		Nature of Business Port Operator to Tanjung Manis Port Authority since 12th May 2013	
Holding Company Pusaka Capital Sdn Bhd wholly owned Subsidiary of Sarawak Timber Industry Development Corporation (STIDC)		Type of Services Containerized Cargo Dry Bulk General Cargo Liquid Bulk (Oil & Gas) Project Cargo Storage Trucking Weighing	
		Berths <hr/> Number of berths 4 berths <hr/> Total berth length 703m	
TMP Operating Centres TMP Main Terminal OGC Jetty Anchorage		Port Location Tanjung Manis Sarawak Malaysia	

MILESTONES



VISION

Port of Choice For Integrated Services

MISSION

We are committed to provide efficient integrated port services

“At TMP, Your Needs Matters.”

Sadiah Binti Tu
Executive Director(ED)
sadiahtu@tmpport.com.my
sadiahtu@pusaka.gov.my



TANJUNG MANIS PORT TO:

Tanjung Manis Airport



Distance
19.5km

Average Time
21mins

Sibu Airport

Distance
99.8km

Average Time
1hr 47mins

Sibu Town (Centre of Sarawak)



Distance
82km

Average Time
1hr 20mins

Sarikei Town (Express Terminal)



Distance (via river)
28km

Average Time
30mins

PORT FACILITIES

Administrative Area

- Administrative Office
- Finance Office
- TMPA Office
- Conference Room
- Parking Lots
- Surau
- Canteen



Main Terminal

Number of berths	: 2 berths
Total berth length	: 303m
Draft alongside	: 11m
River mouth entrance	: 8.5m (tidal range 5.4m)
Maximum GRT	: 32,000 tonnes

Container yard (CY) capacity	: 3,151 TEUs
CY Annual Capacity	: 230,000 TEUs
Container ground slots	: 1,173 slots
Reefer container yard	: 57 reefer points
Transit Shed (1)	: General Cargo (39.5m x 55m)
	: Timber Shed (129.5m x 55m)



OGC Jetty

Number of berths	: 2 berths
Distance from river mouth	: 25km
Draft alongside	: 12m
Berth capacity	: 20,000 GRT
Capacity	: 1.5 mil M3 per annum
	: 47k M3 at any one time
Product	: Palm oil, Diesel, Unleaded & Jet A-1 Bitumen



PORT SERVICES



**Berthing / Unberthing
Tugs & Mooring**



Stuffing / Unstuffing



OGC Jetty Operation



Trucking



**Bonded Storage
& Warehousing**



**Handling of Container,
Reefer Container
& Project Cargo**



**24hrs Security
Surveillance**



**Supply of Fresh
Water**



Barging

IN THE HINTERLAND

Shipbuilding Industrial Estate

- ⇒ Marine Engineering
- ⇒ Civil Engineering
- ⇒ Building and repairing of steel vessel

Halal Hub & Agro Activities

- ⇒ Aquaculture
- ⇒ Agriculture
- ⇒ Poultry & Livestock
- ⇒ Food Processing
- ⇒ PKE & PKS
- ⇒ Animal Feeds & Fertilizers

Fishery Industrial Park & Fishmeal Processing Park

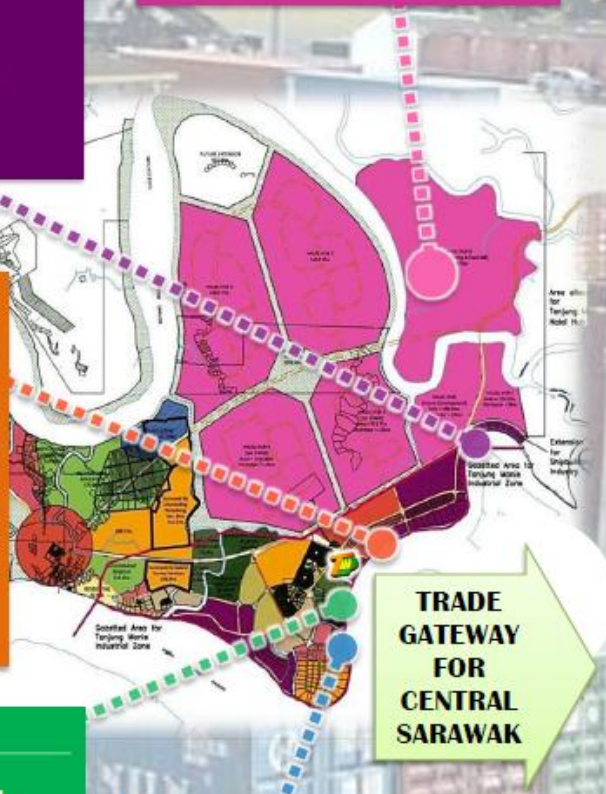
- ⇒ Provide fisheries infrastructures
- ⇒ Support the development of agro-based industry
- ⇒ Process of shrimp & crab powder, fish meal, grass meal, shell powder, belacan, etc.

CODT & POIC

- ⇒ Handling of non-edible oil (Diesel, Unleaded, Bitumen, Jet A1)
- ⇒ Handling of edible oil (Palm Oil-based)

Timber Industry & Timber Related Industry

- ⇒ Manufacturing of woodchips, plywood, fibreboard & sawn timber
- ⇒ Furniture production



**TRADE
GATEWAY
FOR
CENTRAL
SARAWAK**

PORT GLOBAL CONNECTIVITY

LEGENDS

Evergreen Line



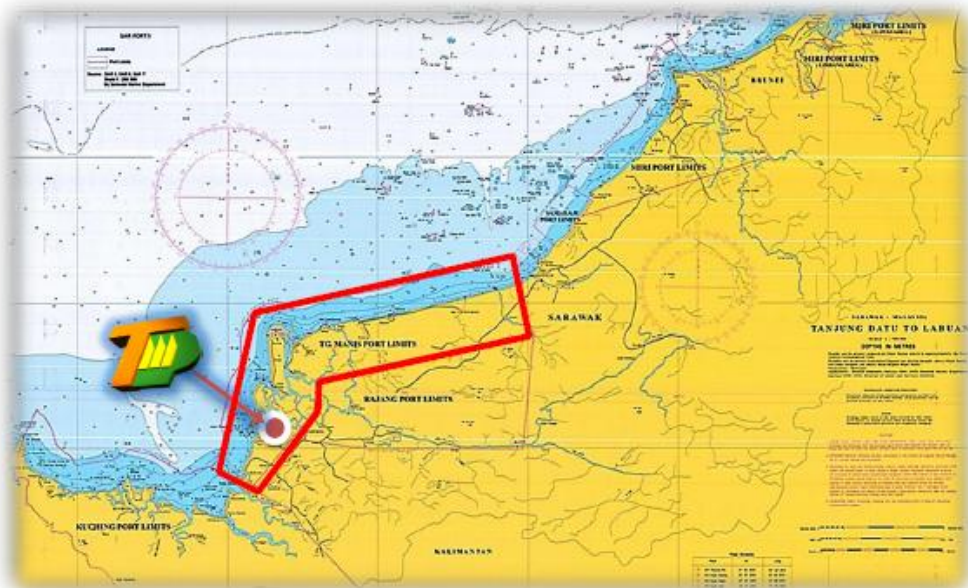
Pacific Selatan Agency



MTT Shipping



PORT LIMITS



PORT LOCATION





Tanjung Manis Integrated Port Sdn Bhd
(780567-T)

Bandar Baru Tanjung Manis,
96150 Tanjung Manis,
Tanjung Manis, Sarawak,
MALAYSIA.



084-613010 (Admin)

084-613009 (Operation)

084-613011 (Engineering)

084-613027 (24hrs Security)



FAX

084-613012



enquiry@tmport.com.my

operation@tmport.com.my



www.tmport.com.my



www.facebook.com/tmport

